

Identafi® Photo - Documentation

Camera Filter Assembly (mm): RT3-230XX (52, 55, 58, 62)



Cameras tested for Identafi camera filter assembly

Nikon Digital SLR

D3x, D3, D700, D300s, D300, D90, D5000, D60, D3000

Canon Digital SLR

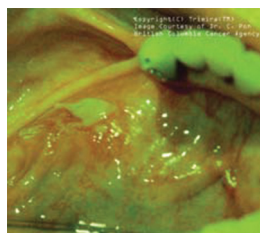
EOS - 1Ds (Mk III), 1D (Mk III), 5D (Mk II), 50D Digital
Rebel: T1i EF-S

Sony Digital SLR

DSLR: -A700, -A700k

Other 35mm cameras with adjustable aperture and shutter speed settings will work as well.
Must accept macro lens.

Recommended lens: 100 mm Macro Lens



Screen with Certainty...Detect with Confidence

Clinical Key Guidelines:

1. Room lights – dim or off (use laser pointer or flashlight to focus before taking picture)
2. Close Shades/Blinds in the room
3. Place Filter in front of camera
4. Turn flash off of camera
5. Use Camera Settings below (or equivalent)

DSLR Camera Settings

This is example of how settings appear on Nikon D700 Camera

White: 1/30; F22	Bracketing: 9F (1.0)
Fl Violet: 1/30; F5.6	ISO: 3200 (recommended)
Green-Amber:	1/30; F22 M (Manual)
	S (Single Image Focus)
	W/B: 5880 K

M	30	F8/F22
L		
Raw		
Fine		

Legend

- **1/30** of a second is shutter speed
- **FX** is the aperture size (amount of light allowed in; larger F#, smaller aperture, less light allowed in)
 - **Fluorescence (Violet): F8** – dim light, need larger aperture for more light to come in
 - **Reflectance (White/Green-Amber): F22** – bright light, want smaller aperture for less light to come in
- **Manual: M** - Manual Focus (Automatic settings are not optimal in dim light)
- **Bracketing - 9F; 1.0** - takes 9 total pictures, 1 on each side of the nominal (1.0 intervals)
 - Note: Stay still for 9 pictures total – brace for less image movement (Other options: 3F, 5F, 7F – 0.5,0.7)
- **Single Image Focus: S** - Focus on single image and then acquires, does not refocus each image
- **FULL** - Full Range of Focus during image focus
- **White Balance(WB)** Temperature set at **5880 K**
- **VR ON** - Keep ON
- **Image Quality: Raw** - Both JPEG and Raw data acquired (for data processing)
- **ISO: 3200** (optimal)
- **Resolution: Fine** - Acquire pictures in fine resolution (JPEG 1:4 Compress)
- **CH** - Continuous Highs Speed (5 frames)
- We shoot 100mm focal length at magnifications 1: 1.5 to 1: 1.2

*NOTE: If using a camera with ISO 1600 – nominal settings would be different:

- Shutter speed: 1/15
- Aperture Size: F4